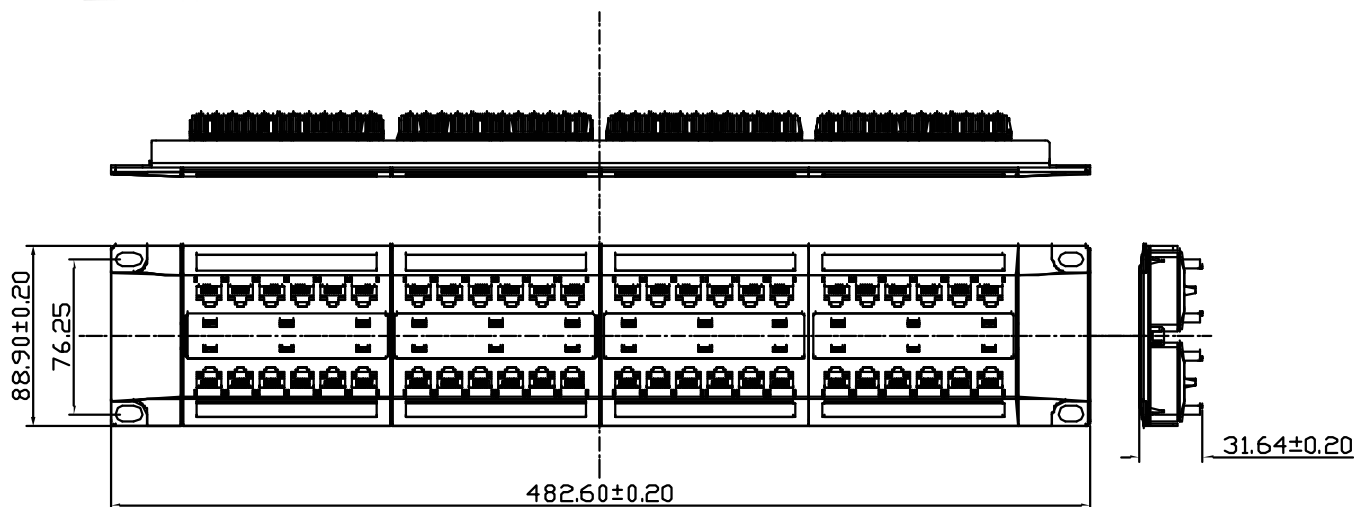
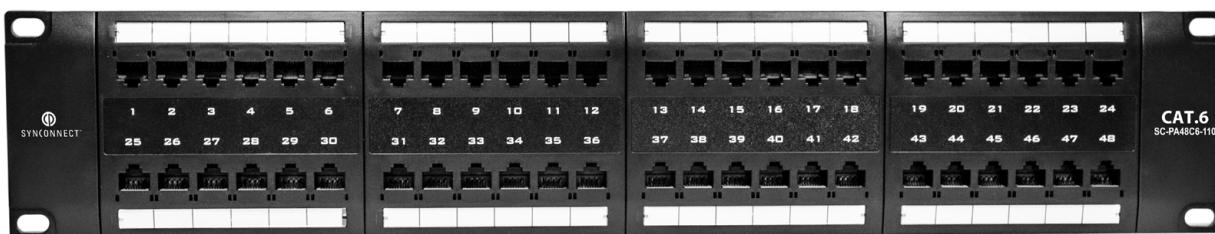


SC-PA48C6-110



Cat 6 Patch Panel 48 Port EIA TIA 110 Style



FEATURES

- 2U Rack Mountable
- Contacts are phosphor bronze plated with 50 micro inches hard gold
- KRONE/110 universal IDC connector provides vertical termination for 22-26 AWG solid wires
- Dual T568A/T568B wiring
- Polycarbonate 94V0 rated
- UL listed
- PoE compliant in accordance with IEEE802.3bt Type 4

STANDARDS COMPLIED

ANSI/TIA/EIA-568-C.2
ISO/IEC 11801-1
ANSI/TIA/EIA-569-B
ISO/IEC 60603-7-4
ANSI/TIA/EIA-310-D
PoE+, 4PPoE

ELECTRICAL SPECIFICATION

Insulation Resistance: $\geq 500 \text{ M}\Omega$
Dielectric Withstand Voltage: 1000VDC
Contact Resistance: $\leq 20 \text{ m}\Omega$
Current Rating: 1.5A at 68°F

MECHANICAL SPECIFICATION

Plug insertion Life: ≥ 750 times RJ45 plus 200 times RJ12 plug in
Contact Force: 99.2g (3.5oz) FCC Plug
Plug Retention Force: 30lb (133n/13.3Kg)
110/Krone IDC Insertion Force: 4.5Kg minimum
110/Krone IDC Retention Force: 0.5Kg minimum
Temperature Test: -40 to 150°F (-40 to 66°F)
RJ45 Contact: Phosphor Bronze with 50u" Gold plating over contact area

Distributed in Canada by



620 Rowntree Dairy Rd.
Woodbridge, Ontario L4L 5T8
1-888-797-7686

401 Rue Locke
St. Laurent, Que. H4T 1X7
1-800-361-7349