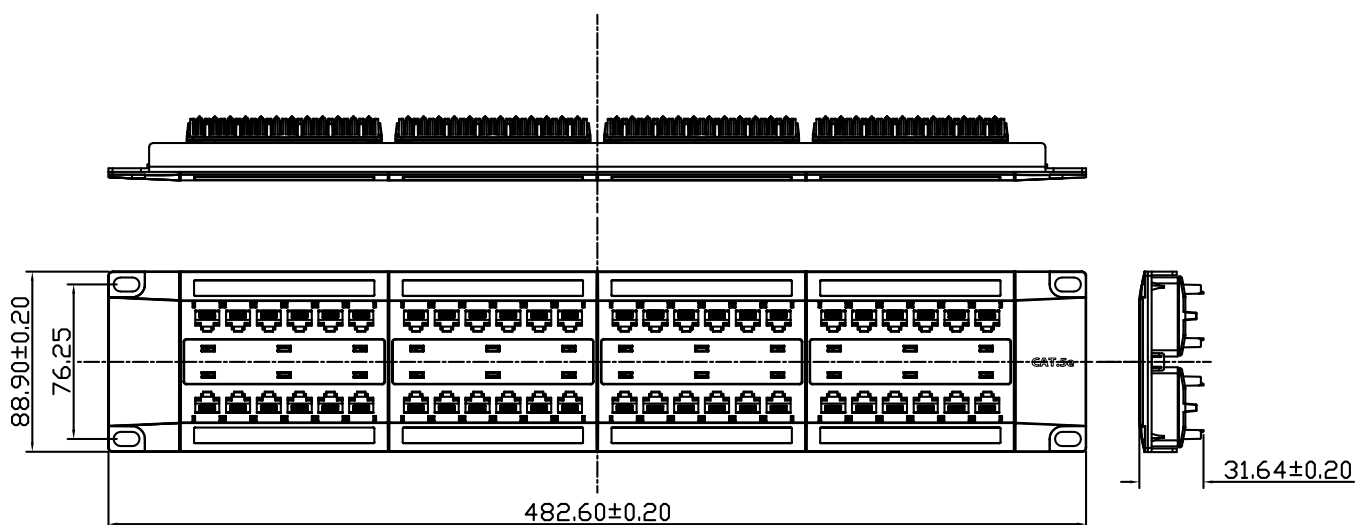
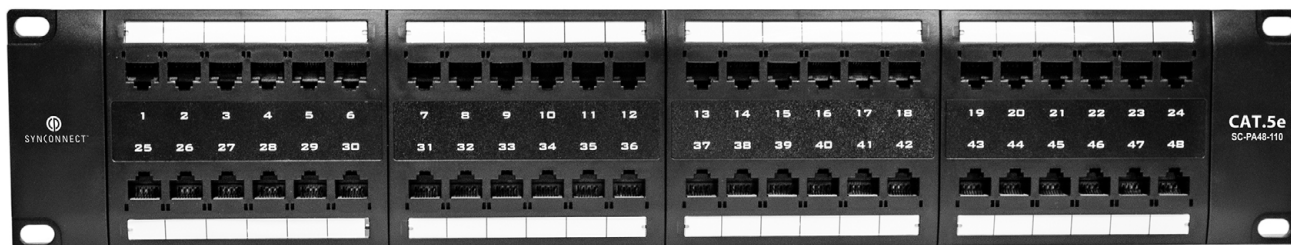


# SC-PA48-110

 SYNCCONNECT™

## Cat 5E Patch Panel 48 Port EIA/TIA 110 Style



### FEATURES

- 2U Rack Mountable
- Contacts are phosphor bronze plated with 50 micro inches hard gold
- KRONE/110 universal IDC connector provides vertical termination for 22-26 AWG solid wires
- Dual T568A/T568B wiring
- Polycarbonate 94V0 rated
- UL listed
- PoE compliant in accordance with IEEE802.3bt Type 4

### STANDARDS COMPLIED

ANSI/TIA/EIA-568-B.2-1  
ISO/IEC 11801 2nd edition: 2002  
EN50173-1: 2002

### ELECTRICAL SPECIFICATION

**Insulation Resistance:**  $\geq 500 \text{ M}\Omega$   
**Dielectric Withstand Voltage:** 500VAC  
**Contact Resistance:**  $\leq 35 \text{ m}\Omega$   
**Current Rating:** 1.5A at 68°F

### MECHANICAL SPECIFICATION

**Plug insertion Life:**  $\geq 750$  times RJ45 plus 200 times RJ12 plug in  
**Contact Force:** 99.2g (3.5oz) FCC Plug  
**Plug Retention Force:** 30lb (133n/13.3Kg)  
**110/Krone IDC Insertion Force:** 4.5Kg minimum  
**110/Krone IDC Retention Force:** 0.5Kg minimum  
**Temperature Test:** -40 to 150°F (-40 to 66°F)  
**RJ45 Contact:** Phosphor Bronze with 50u" Gold plating over contact area

Distributed in Canada by

**PROVO**  LTD.  
LTD.

620 Rowntree Dairy Rd.  
Woodbridge, Ontario L4L 5T8  
1-888-797-7686

401 Rue Locke  
St. Laurent, Que. H4T 1X7  
1-800-361-7349